

I. Match the definition to the process or landform.

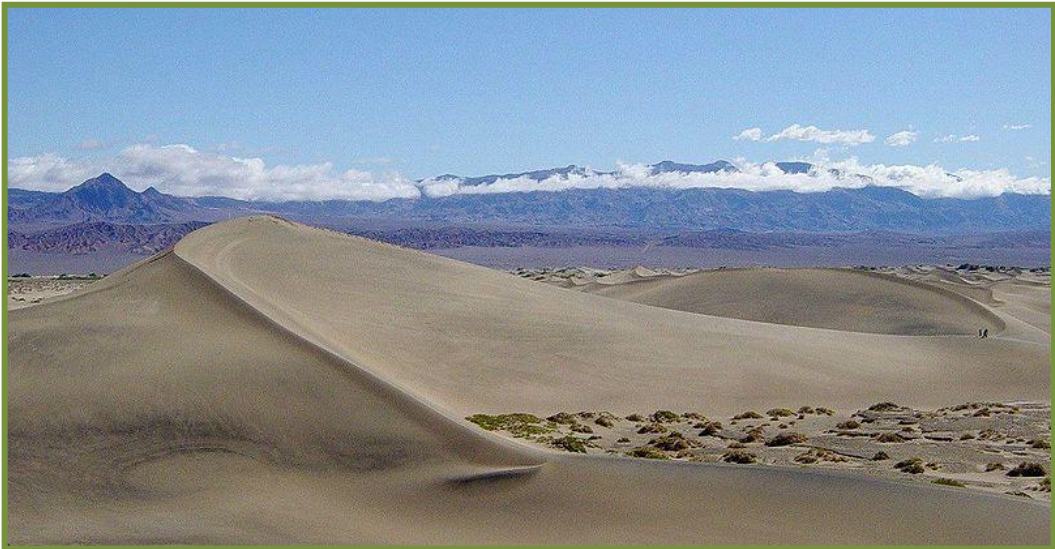
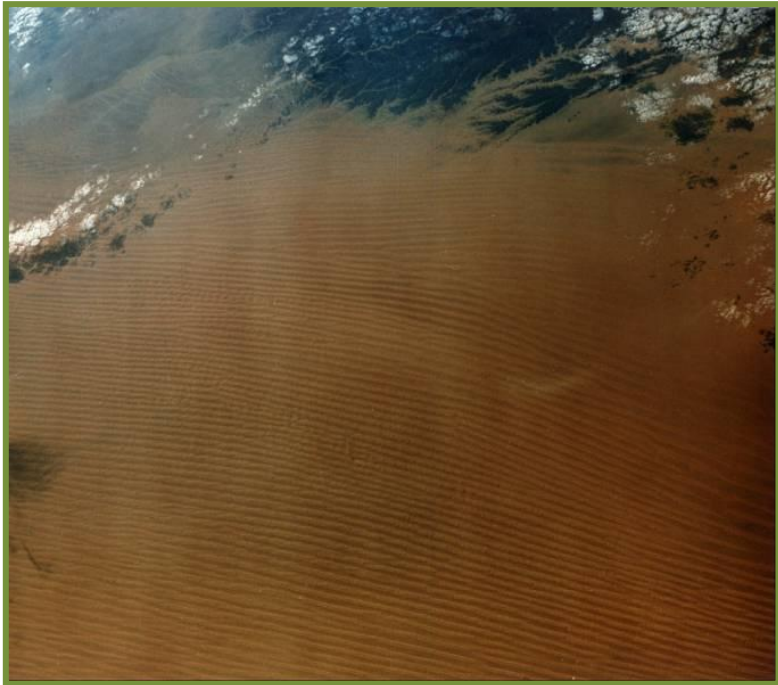
... is where unconsolidated, fine-grained particles are bounced along the ground by the wind.	A ventifact	... is a form of ventifact exhibiting a characteristic three-faced pyramidal shape.
A mesa	... is a crescent-shaped sand dune lying at right angles to the prevailing wind.	Deflation
A sand sea	... is where a river splits into several much smaller channels and deposits material due to the high sediment load.	A sand sheet
... is where regular impacts between sand grains break them into smaller, rounder and smoother fragments.	A desert pavement	... is an isolated rock hill, knob, or small mountain which rises abruptly from a surrounding desert plain.
... is the removal by wind of unconsolidated, fine-grained particles.	A blowout	... is a long, straight sand dune formed parallel to the prevailing wind direction.
Hydrolysis	... is a flat expanse of ground covered with salt and other minerals.	A seif
... is a steep-sided, deep and often flat-floored valley carrying a river only under flood conditions.	A wadi	... is a rock which has been abraded, pitted, etched, grooved or polished by wind-driven sand.
Attrition	... is where unconsolidated, fine-grained particles are carried within the air.	A yardang

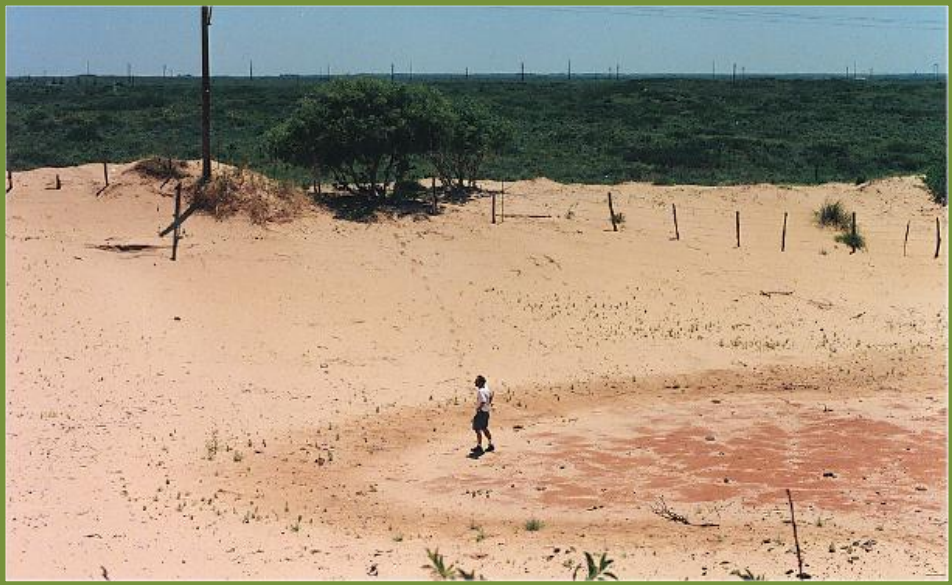
## Hot environments – processes and landforms

A pedestal rock	... is a very large, generally flat area with no dunes or significant vegetation.	A dreikanter
... is a linear ridge of clay, silt or rock which has been eroded by both abrasion and deflation.	... is where sand blown by the wind erodes rock surfaces.	Corrosion
... is where water reacts with minerals such as feldspars to produce clay minerals.	An inselberg	... is a table shaped hill carved from bedrock by aeolian erosion.
... is a very large area containing a variety of sand dune types.	... is a temporary river which will only flow intermittently.	A salt pan
Suspension	An exogenous river	A deflation hollow
Saltation	... is an isolated pillar of rock, heavily undercut.	Braiding
... is a large surface depression created by aeolian processes commonly found in arid and semiarid regions.	... is a permanent river flowing through a desert which obtains its water from outside the desert environment.	... is where there is a surface layer of small stones resting above much finer material.
A barchan	An ephemeral river	... is a hollow, generally small in diameter, formed by the removal of fine-grained particles by wind.



2. Match each photograph to the relevant landform in the card sort.





**Answers**

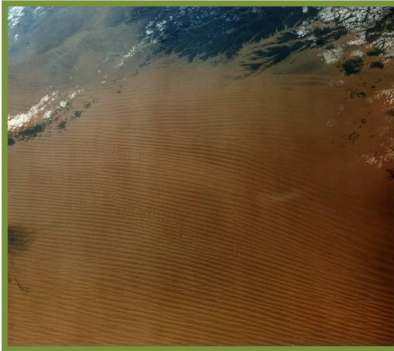
<b>Attrition</b>	... is where regular impacts between sand grains break them into smaller, rounder and smoother fragments.
<b>A barchan</b>	... is a crescent-shaped sand dune lying at right angles to the prevailing wind.
<b>A blowout</b>	... is a hollow, generally small in diameter, formed by the removal of fine-grained particles by wind.
<b>Braiding</b>	... is where a river splits into several much smaller channels and deposits material due to the high sediment load.
<b>Corrosion</b>	... is where sand blown by the wind erodes rock surfaces.
<b>Deflation</b>	... is the removal by wind of unconsolidated fine-grained particles.
<b>A deflation hollow</b>	... is a large surface depression created by aeolian processes commonly found in arid and semiarid regions.
<b>A desert pavement</b>	... is where there is a surface layer of small stones resting above much finer material.
<b>A dreikanter</b>	... is a form of ventifact exhibiting a characteristic three-faced pyramidal shape.
<b>An ephemeral river</b>	... is a temporary river which will only flow intermittently.
<b>An exogenous river</b>	... is a permanent river flowing through a desert which obtains its water from outside the desert environment.
<b>Hydrolysis</b>	... is where water reacts with minerals such as feldspars to produce clay minerals.
<b>An inselberg</b>	... is an isolated rock hill, knob, or small mountain which rises abruptly from a surrounding desert plain.
<b>A mesa</b>	... is a table shaped hill carved from bedrock by aeolian erosion.
<b>A pedestal rock</b>	... is an isolated pillar of rock, heavily undercut.

<b>Saltation</b>	... is where unconsolidated, fine-grained particles are bounced along the ground by the wind.
<b>A salt pan</b>	... is a flat expanse of ground covered with salt and other minerals.
<b>A sand sea</b>	... is a very large area containing a variety of sand dune types.
<b>A sand sheet</b>	... is a very large, generally flat area with no dunes or significant vegetation.
<b>A seif</b>	... is a long, straight sand dune formed parallel to the prevailing wind direction.
<b>Suspension</b>	... is where unconsolidated, fine-grained particles are carried within the air.
<b>A ventifact</b>	... is a rock which has been abraded, pitted, etched, grooved or polished by wind-driven sand.
<b>A wadi</b>	... is a steep-sided, deep and often flat-floored valley carrying a river only under flood conditions.
<b>A yardang</b>	... is a linear ridge of clay, silt or rock which has been eroded by both abrasion and deflation.



### Pedestal rock in Egypt

[http://en.wikipedia.org/wiki/File:Weisse\\_W%C3%BCste.jpg](http://en.wikipedia.org/wiki/File:Weisse_W%C3%BCste.jpg)  
by Christine Schultz 2003



### Seif dunes from space in the Rub-al-Khali (The Empty Quarter) of Saudi Arabia.

The photograph covers tens of thousands of square kilometres of area.

<http://history.nasa.gov/SP-4203/phot01.htm> 1965



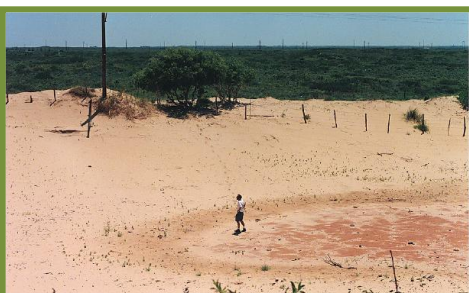
### Barchan dune in Death Valley, USA

[http://en.wikipedia.org/wiki/File:Mesquite\\_Sand\\_Dunes.JPG](http://en.wikipedia.org/wiki/File:Mesquite_Sand_Dunes.JPG)  
by Daniel Mayer 2003



### Yardang

[http://en.wikipedia.org/wiki/File:Yardang\\_Lea-Yoakum\\_Dunes.jpg](http://en.wikipedia.org/wiki/File:Yardang_Lea-Yoakum_Dunes.jpg)  
United States Department of Agriculture 2000



### Blowout, Texas, USA

[http://en.wikipedia.org/wiki/File:Blowout\\_Earth\\_TX.jpg](http://en.wikipedia.org/wiki/File:Blowout_Earth_TX.jpg)  
United States Department of Agriculture 1996



Wadi and ephemeral river, Israel

<http://en.wikipedia.org/wiki/File:NachalParanI.jpg>  
by Mark A. Wilson 2007



Salt pan, Bolivia

[http://en.wikipedia.org/wiki/File:Salar\\_Uyuni\\_Bolivia.JPG](http://en.wikipedia.org/wiki/File:Salar_Uyuni_Bolivia.JPG)  
by Olywyer 2009



Desert pavement with venifacts including dreikanter

<http://en.wikipedia.org/wiki/File:DesertPavementMojave2010.JPG>  
by Mark A. Wilson 2010