

A favela is the term used for a slum or shantytown in Brazil. Favelas are generally located in or on the edge of urban areas. The 2010 Brazilian census identified approximately 6% or 11.25 million people as living in favelas – roughly equivalent to the population of Portugal. However, some experts have suggested this figure is a considerable underestimation.



**Rocinha, the largest favela in Brazil**

Image used courtesy of Chensiyuan, 2010 [http://commons.wikimedia.org/wiki/File:1\\_rocinha\\_favela\\_closeup.JPG](http://commons.wikimedia.org/wiki/File:1_rocinha_favela_closeup.JPG)

### Student tasks

1. List the main problems found in the favela.
2. Which issue or problem do you think should be the highest priority?
3. Rank the remaining problems in descending order of importance.
4. What would be your solution to the highest priority problem?
5. Why might your solution to question four probably not be a perfect answer? You could consider the people who your solution will **not** help.
6. Imagine you are in charge of planning and development in Rio de Janeiro and you have received a single World Bank grant of 250 FP to spend on improvements for the favela. How would you divide the money? Use the costings sheet to allocate the grant.
7. There are many problems in Favelas, and they cannot all be solved at once. Why do you think this might be?

**Drainage network**

— 40 FP —



**Pipes and concrete to build drainage network**

— 30 FP —



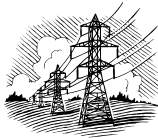
**Paint for houses**

— 10 FP —



**Electricity connection for whole area**

— 50 FP —



**Electricity connection to one building**

— 10 FP —



**Weekly doctor's visit to the area**

— 15 FP —



**Community centre**

— 25 FP —



**Building materials for one family house (concrete and wood)**

— 10 FP —



**20 metre by 20 metre grass area**

— 10 FP —



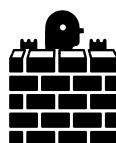
**Local factory (will employ 40 people in labouring jobs)**

— 130 FP —



**Build one new family house**

— 20 FP —



**Qualified teacher for a year**

— 60 FP —



**Weekly rubbish removal for a year**

— 50 FP —



**Water connection for one building**

— 20 FP —



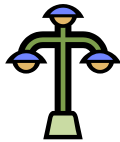
**Pipes and concrete to build sewerage network**

— 30 FP —



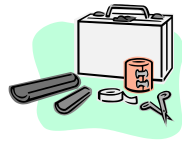
**Street lighting**

— 30 FP —



**Medical Supplies**

— 20 FP —



**Small petrol electricity generator**

— 20 FP —



**Local fresh water tap**

— 40 FP —



**Weekly nurse's visit to area**

— 5 FP —



**Sewerage network**

— 100 FP —

